

# WASHINGTON MONUMENT AND GROUNDS



The iconic Washington Monument is a landmark for National Mall visitors, both during the day and at night.

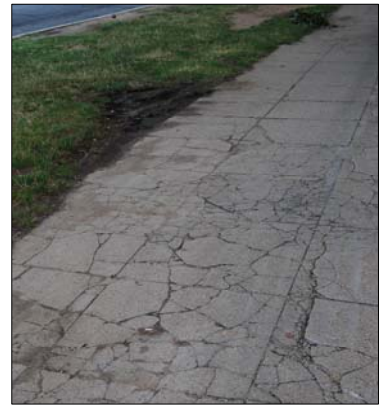


Portions of the grounds of the Washington Monument show areas of bare compacted soils and poor turf conditions.





Deteriorated walkways, social trails, and lack of maintenance access routes contribute to present conditions.



The German-American Friendship Garden on the north grounds of the Washington Monument is not readily identifiable.



One of two interactive water features at the German-American Friendship Garden.

The west grounds of the Washington Monument showing turf conditions. Only the central panel has irrigation.



The temporary refreshment tent will be removed, and services will be provided at a permanent location to allow the construction of the National Museum of African American History and Culture.

The Jefferson Pier Marker delineates the original location proposed for the Washington Monument.



Turf has been damaged around the Washington Monument as children play on the post-and-chain fencing.



A project is underway to remove the temporary security screening building on the east side of the monument.

Visitors queue up for Washington Monument tickets at Monument Lodge in the morning. The historic building provides a small bookstore and public restrooms





Survey Lodge is away from main circulation routes. Somewhat hidden by vegetation, this historic structure is being reused as an information station.

Vehicles behind Survey Lodge are not screened from public view.



The circular restroom south of the monument dates from the 1960s and is difficult to maintain and inadequately sized to meet demand.



The Sylvan Theater is not oriented to take full advantage of seating on the hillside south of the Washington Monument. Infrastructure is outdated for performances.

The area behind the Sylvan Theater is in a slight depression, so facilities are generally not visible. New facilities in this location would be convenient and accessible by pedestrians and operational vehicles.



The monument grounds are used nearly constantly for recreational activities, including permitted team sports, such as softball.

# WORLD WAR II MEMORIAL



The World War II Memorial lies on the axis from the Washington Monument to the Lincoln Memorial and was built around the historic rainbow pool. The fountains add visual interest and mask urban background noise.



Granite has been found to be more resistant to pollution and wear and tear than marble.



Granite paving patterns underscore the use of quality materials and add interest to large open areas.



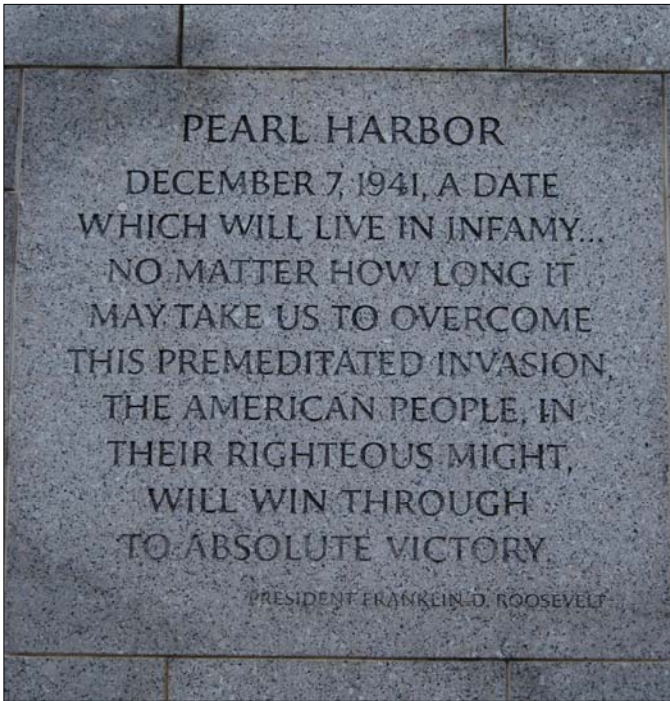




The Freedom Wall includes 4,000 gold stars commemorating more than 400,000 who gave their lives in the war.



The memorial has been a popular destination for visitors since it opened, with average annual visitation of about 4.4 million from 2004 to 2008.



Carved inscriptions are easy to read.



Bronze bas-reliefs depict wartime scenes, both in the field and at home.





Design details and granite paving at the World War II Memorial contribute to a sense of quality and place.



This group seating area just north of the World War II Memorial is one of the few such areas on the National Mall.





The World War II visitor contact station is south of the memorial.

The restrooms are near the contact station.



Sign announcing times for interpretive programs.

# CONSTITUTION GARDENS



Constitution Gardens is enclosed by trees, offering opportunities for quiet away from more actively visited areas of the National Mall.

The plaza at the east end of the lake was intended as the location of a restaurant in the original 1970s design.

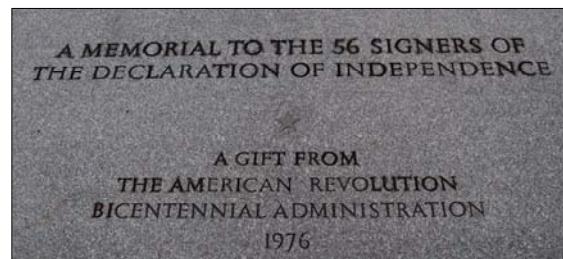


Stone terraces lead down from the plaza to the lake and were planned to provide outdoor seating space.



One of the plaza terraces.

The memorial to the 56 Signers of the Declaration of Independence is on an island in Constitution Gardens Lake. Each signature is highlighted in gold.





A refreshment stand is on the west side of the lake.

Deteriorating asphalt walk.



Looking east toward Constitution Gardens from near the Vietnam Veterans Memorial.



The historic Lockkeeper's House is at the corner of 17th and Constitution Avenue.

The proximity of the structure to Constitution Avenue obscures sightlines for drivers. Space for pedestrians waiting to cross the streets is limited.



The Potomac Park levee runs between Constitution Gardens and the Vietnam Veterans Memorial on the north and the Lincoln Memorial on the south, effectively separating the areas.



# VIETNAM VETERANS MEMORIAL



View of the Vietnam Veterans Memorial from the east.



The ambience of the memorial inspires quiet and private moments for commemoration.





View of the Memorial Wall from the west.



The base of the flagpole at the west entrance to the memorial is designed to commemorate all branches of the armed forces.



The *Three Servicemen* statue was added south of the wall in 1983.



View from the south.

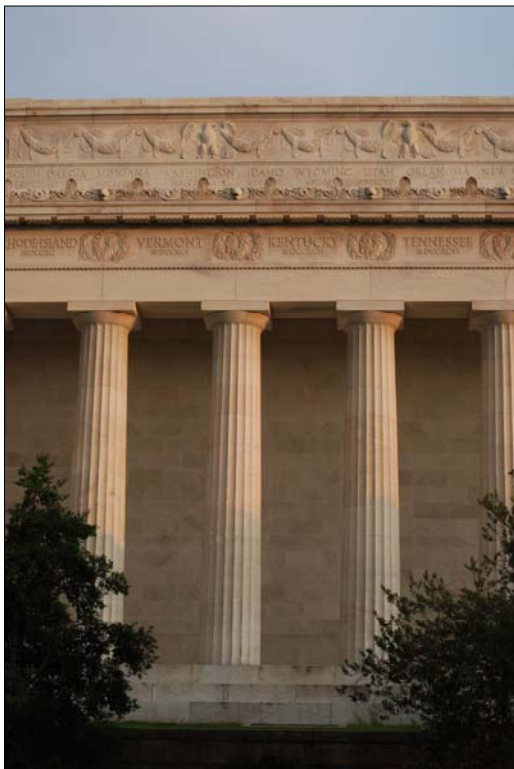
The Vietnam Women's Memorial was added in 1993.



# LINCOLN MEMORIAL AND GROUNDS



The Lincoln Memorial is one of the most frequently visited sites on the National Mall.



At what point does user capacity exceed optimal conditions for having an enjoyable experience at a memorial?





Social trails along both sides of the reflecting pool have obliterated turf.

Tour groups gather wherever they can find space.



Bicycle tours are becoming an increasingly popular way to sightsee.



Visitors use temporary security bollards as well as the stairs for seating near the Lincoln Memorial.



The north (left) and south (below) refreshment stands at the Lincoln Memorial use geothermal energy to reduce energy costs. These are two of the few places on the National Mall providing shaded seating for visitors.





The visitor information station for the Vietnam Veterans Memorial (left) is northeast of the Lincoln Memorial and the one for the Korean War Veterans Memorial (below) is southeast.



Post-and-chain fencing has helped protect turf areas, but some walks are too narrow for the number of visitors.

Sand volleyball courts are available north of the Lincoln Memorial.



## WATERGATE STEPS



The Watergate Steps are west of the Lincoln Memorial; Ohio Drive is between the steps and the Potomac River.

Two sculptures representing the *Arts of Peace* flank the east entrance to Rock Creek and Potomac Parkway.



View to Arlington National Cemetery and Arlington House (the Robert E. Lee Memorial).



## CONSTITUTION AVENUE BELVEDERE



The historic belvedere, northwest of the Lincoln Memorial, marks the end of Constitution Avenue at the Potomac River. It was designed as a formal viewing area, with seating built into stone walls and open balustrades. The avenue no longer continues to the belvedere because of changes in the 1960s to provide access to the Theodore Roosevelt Memorial Bridge (US 66) and the Potomac River Freeway.

